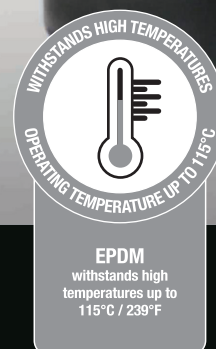




DEKS™ SHEAR BANDED COUPLINGS

Couplings

Rubber Bushes



DEKS™ SHEAR BANDED COUPLINGS

DEKS Industries was established in 1947. Each and every year its reputation for quality, service and innovation grows.

Headquartered in Melbourne Australia with offices in the United Kingdom and the United states of America.

DEKS Industries lives by the mantra "Innovative, Better, Faster" applying these principles to everything we do. When you purchase a DEKS product you can be assured you're buying the best there is.

Key features:



Fits multiple pipe materials.



Durable.



Suitable for harsh environments.



Water authority approved.





Applications

Shear Banded Couplings

Why use a Shear Banded Coupling?

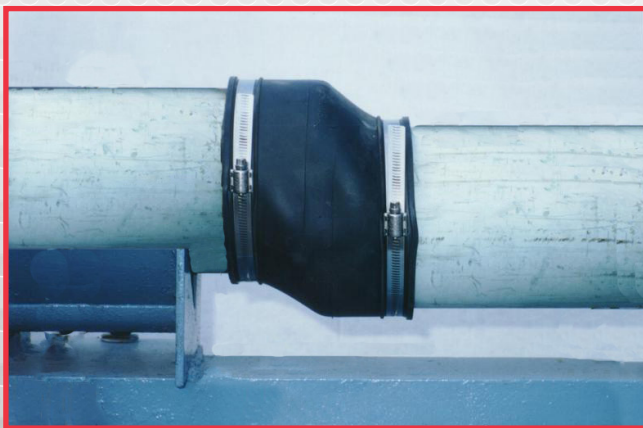
The stainless-steel shear band ensures the integrity of the joint and keeps pipes aligned under load. When repairing or joining pipes in unstable ground conditions, Deks Shear Banded Couplings will give the stability and resistance to shear forces imposed by ground movement or heavy above ground loads.

Causes of misalignment

- Improper back fill or trench beddings.
- Expansion/contraction of soil caused by temperature changes, earthquakes or settling soils.
- Vibration in and around transport areas such as highways, train tracks or airports.

Misalignment results in:

- A stepped profile in the sewer line can create flow obstruction or blockages.
- Pipes pulling apart, causing leakage in the joint.
- Root infestation.



The Range

Shear Banded Couplings

Couplings



Black

Pressure Rated 16 bar

Pipe OD Range mm	Coupling Length mm	Part number
100-115	121	DSC100-115
125-150	137	DSC125-150
160-180	137	DSC160-180
175-200	150	DSC175-200
225-250	150	DSC225-250
250-275	150	DSC250-275
265-290	150	DSC265-290



Example of Bush Connection



Rubber Bushes



Black

Bush Thickness: 8mm

Pipe OD Range mm	Bush OD mm	Bush Length mm	Part number
105-115	131	55	DSCB08/105-115
115-125	143	60	DSCB08/115-125
150-160	178	60	DSCB08/150-160
156-166	182	60	DSCB08/156-166
160-170	185	60	DSCB08/160-170
170-180	196	60	DSCB08/170-180
240-250	268	60	DSCB08/240-250
255-265	282	60	DSCB08/255-265

Bush Thickness: 15mm

Pipe OD Range mm	Bush OD mm	Bush Length mm	Part number
105-115	145	60	DSCB15/105-115

Bush Thickness: 16mm

Pipe OD Range mm	Bush OD mm	Bush Length mm	Part number
154-164	197	60	DSCB16/154-164
240-250	284	60	DSCB16/240-250

Related Solutions



Rubber Joiners

Rubber joiners for low pressure applications.



Gibaults

316 Stainless steel repair couplings for joining or repairing pressure pipes.



Visit our website to watch our product videos.

www.deks.com.au

www.deks.com.au

DEKS™



www.deks.com.au

*Follow
Us On*



Version 6.00